



# GAT MONTHLY MEMBERSHIP PROGRESS REPORT

Results as of: 5/31/2023

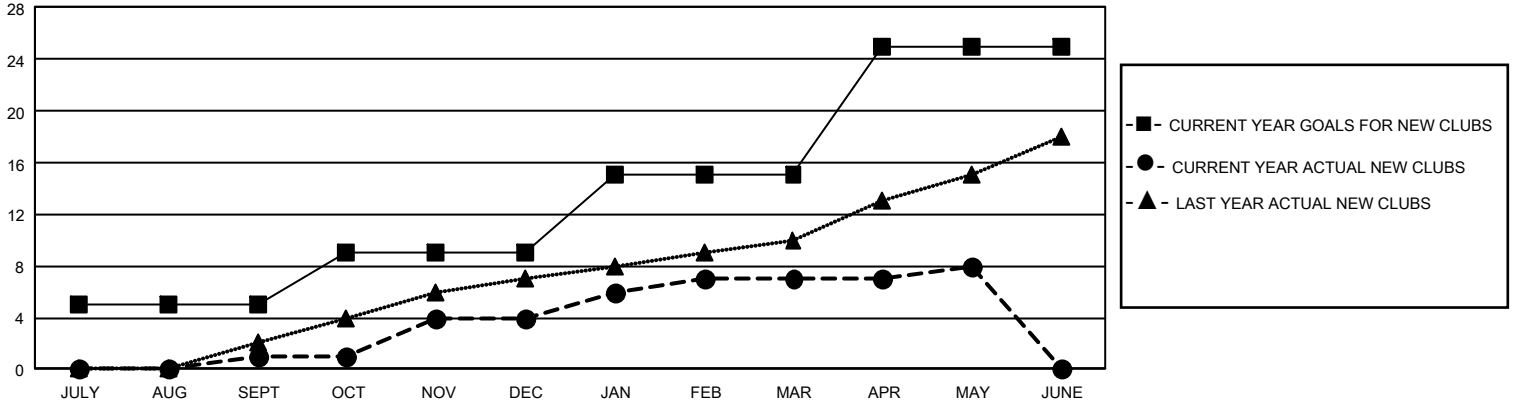
## GMT Constitutional Area 4, Group B

REPORT DOES NOT INCLUDE CLUBS IN UNDISTRICTED AREAS.

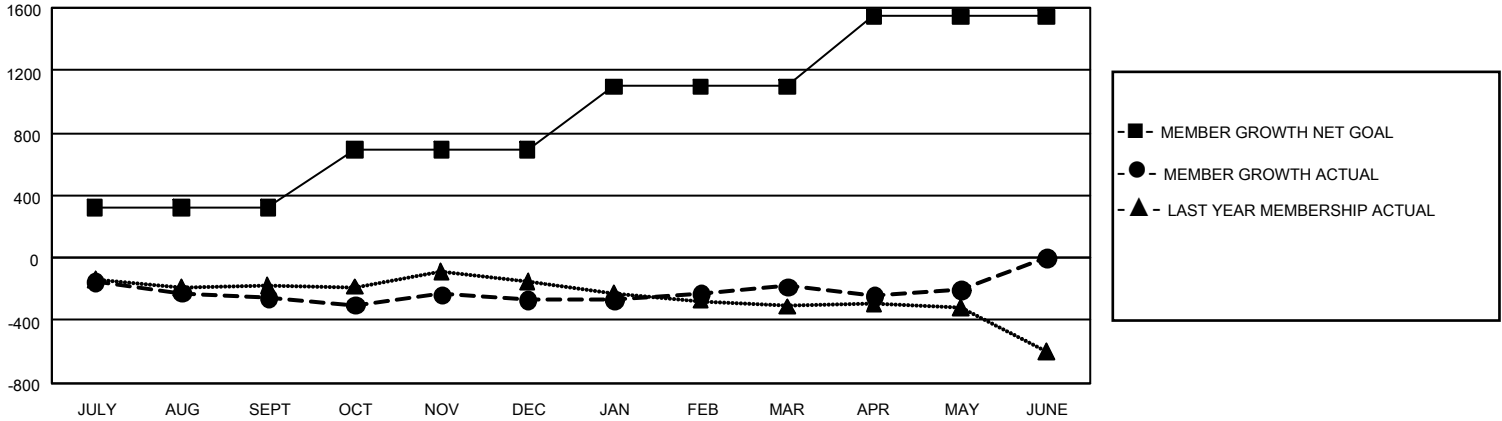
Clubs			
RESULTS FOR 2022-2023			
QUARTER	NEW CLUB GOAL	NEW CLUBS	DROPPED CLUBS
JULY/AUG/SEPT	15	1	4
OCT/NOV/DEC	12	3	2
JAN/FEB/MAR	18	3	3
APR/MAY/JUNE	30	1	5

Members			
RESULTS FOR 2022-2023			
QUARTER	MEMBER GROWTH NET GOAL	MEMBER GROWTH ACTUAL	DROPPED MEMBERS ACTUAL (including transfers)
JULY/AUG/SEPT	322	591	784
OCT/NOV/DEC	368	815	743
JAN/FEB/MAR	407	940	800
APR/MAY/JUNE	449	667	631

GOALS AND ACTUAL NEW CLUBS CUMULATIVE



GOALS AND ACTUAL MEMBERS CUMULATIVE



<b>DROPPED CLUBS: 14</b>	1,315 CLUBS OF 2,125 ADDED 1 OR MORE NEW MEMBERS	<b><u>GENDER DISTRIBUTION</u></b>	
		MALE 58,720 (83.52%) FEMALE 11,569 (16.46%) NON BINARY 0 (0.00%) PREFER NOT TO ANSWER 14 (0.02%)	
<b><u>DROPPED MEMBERS</u></b>		<a href="#">CLICK HERE FOR CUMULATIVE MEMBERSHIP DATA</a>	TOTAL FAMILY UNIT MEMBERS 795
DECEASED 774 CLUB CANCELLED 67 OTHER 2,112 <b>TOTAL 2,953</b>	FAMILY MEMBERS PAYING HALF DUES 362		